



*Welcome to
Comberton Village College
Open Evening
Thursday, 5th October 2023*

Comberton Village College

Peter Law, Principal

Regina Lawrence, Deputy Principal

Head Prefect team

Year 7 pupils



Caring
Confident
Capable



The Cam Academy Trust

**The driving purpose in all of our Academies is
'Excellence for All'**

At the heart of our work lie the five core principles of The Cam Academy Trust.

The excellence principle - Education must be of the very highest standard

The comprehensive principle - Education must be for all kinds and abilities

The broad education principle – Education must incorporate a broad educational experience for all pupils

The community principle - Every Academy must be at the heart of its local community and serve it well

The partnership principle - Each Academy must seek to work positively in partnership with others for mutual benefit.

The international principle - The curriculum inside and outside the classroom must have a clear international dimension.

CVC Pupils love learning



CVC targets are routinely derived from FFT5 projections, and as such have an element of additional stretch built into them.

**CAM Academy
Trust Review**

Caring Confident Capable



As an institution where pupils experience a huge amount of outstanding teaching, there is a great amount of effective practice routinely demonstrated at CVC.

**CAM Academy Trust
Review**



Teachers routinely used sophisticated technical vocabulary with the groups and had high expectations that pupils would respond using the same level of vocabulary. The level of discussion generated and the ability of teachers to allow pupils to generate their own ideas was consistently of a highly impressive nature.

As an institution where pupils experience a huge amount of outstanding teaching, there is a great amount of effective practice routinely demonstrated at CVC.

CAM Academy Trust Review

GCSE outcomes 2023

Comberton Village College

2023

KS4

VA

Overview

KS4 Attainment 2023 - Actual results

290 pupils

Attainment 8 (Overall)

5.6 + ↓



Significantly above the national average (4.7) ◀

% English & Maths (Grade 4+)

79% +



Significantly above the national average (67%) ◀

KS4 Progress 2023 - Value Added

274 matched pupils

Progress 8 (Overall)

+0.47 +



Significantly above the national average (0) ◀

% English & Maths (Grade 4+)

+8% +



Significantly above the national average (0%) ◀

GCSE outcomes 2021-2023

KS4 performance summary

	Actual results			Pupil progress		
	2021	2022	2023	2021	2022	2023
Number of Pupils / % Matched	291	259	290	92%	95%	94%
Attainment / Progress 8 (Overall)	6.3	6.0	5.6	+0.66	+0.52	+0.47
Attainment / Progress 8 (English)	6.4	6.0	5.7	+0.60	+0.18	+0.28
Attainment / Progress 8 (Maths)	6.1	5.9	5.5	+0.53	+0.56	+0.42
Attainment / Progress 8 (Ebacc)	6.5	6.2	5.7	+0.86	+0.80	+0.69
Attainment / Progress 8 (Open)	6.3	6.0	5.5	+0.58	+0.45	+0.43
% English & Maths (Grade 4+)	84%	82%	79%	+4%	+5%	+8%
% English & Maths (Grade 5+)	72%	68%	59%	+10%	+9%	+7%
% Ebacc (Grade 4+)	49%	47%	40%	+13%	+16%	+12%
% Ebacc (Grade 5+)	41%	41%	32%	+11%	+16%	+11%
% 5+ GCSEs (Grade 7+)	47%	45%	31%	+12%	+20%	+9%
Average entries per pupil	8.4	8.6	8.5	+0.0	+0.3	+0.3
Average entries per pupil (GCSE only)	8.0	8.1	7.9	+0.1	+0.4	+0.2
% Pupils taking 3 single sciences	50%	49%	49%	+15%	+17%	+18%

GCSE comparisons 2018-2020

KS4 performance summary

	Actual results			Pupil progress		
	2018	2019	2020	2018	2019	2020
Number of Pupils / % Matched	242	252	253	94%	94%	94%
Attainment / Progress 8 (Overall)	6.1	6.1	6.4	+0.78	+0.56	+0.62
Attainment / Progress 8 (English)	6.1	6.0	6.5	+0.59	+0.33	+0.61
Attainment / Progress 8 (Maths)	5.9	6.1	6.2	+0.68	+0.61	+0.48
Attainment / Progress 8 (Ebacc)	6.2	6.3	6.5	+1.01	+0.83	+0.81
Attainment / Progress 8 (Open)	6.0	5.9	6.3	+0.73	+0.40	+0.53
% English & Maths (Grade 4+)	87%	83%	89%	+12%	+6%	+6%
% English & Maths (Grade 5+)	74%	68%	74%	+18%	+8%	+9%
% Ebacc (Grade 4+)	49%	48%	59%	+17%	+12%	+20%
% Ebacc (Grade 5+)	40%	42%	50%	+18%	+14%	+20%
% 5+ GCSEs (Grade 7+)	38%	45%	45%	+15%	+16%	+13%
Average entries per pupil	8.6	8.5	8.5	-0.1	-0.1	-0.0
Average entries per pupil (GCSE only)	8.3	8.2	8.2	+0.1	+0.1	+0.1
% Pupils taking 3 single sciences	44%	50%	54%	+6%	+8%	+16%

Results overview 2023

- The A-level results were very similar to 2019, but with more A*-A grades and slightly fewer A*-C grades
- A-level results at CSF remain well above average
- The BTEC results were excellent and remained very similar to 2019.
- 63% of students gained a D*D*D*-DDD grades compared to the national average of 38%

A-Levels	Actual Results					Student Progress				
	2018	2019	2020	2021	2022	2018	2019	2020	2021	2022
Average points score (A-Level)	38.2	36.7	41.6	43	40.35	+1.4	+0.6	+0.9	+0.3	+0.9
Average grade (A-Level)	B-	B-	B	B+	B	+0.1	+0.1	+0.1	+0.0	+0.1
% A* - A (A-Level)	30	24	40	49	40	+1%	-1%	+2%	+2%	+2
% A* - B (A-Level)	62	59	72	73	68	+5%	+3%	+4%	+0%	+4
% A* - C (A-Level)	85	85	92	90	87	+3%	+5%	+2%	-0%	+3

Level 3 BTEC	Actual Results					2023
	2018	2019	2020	2021	2022	
Average points score (BTEC)	33.77	31.97	32.25	33.53	24.53	31.82
Average grade (BTEC)	Dist	Dist	Dist	Dist	Merit	Dist
% D* - D (BTEC)	57.6	64	47.8	44.1	54.7	63
% D* - M (BTEC)	75.8	78	84.7	79.3	83.3	96
% D* - P (BTEC)	100	100	100	100	100	100



2023	34.8
B-	30
56	56
78	78



The Real Schools Guide 2019: These are the best schools in Cambridgeshire

The Real Schools Guide 2019 aims to give a far more comprehensive picture than traditional league tables



“Comberton Village College is the best state-funded secondary school in Cambridgeshire, according to a comprehensive new guide. The Real Schools Guide 2019, compiled by Reach's data unit, aims to give a far more comprehensive picture than traditional league tables.

It takes into account 51 different data points, including not just GCSE results and Attainment 8 scores, but also factors like Progress 8, pupil-teacher ratios and absence rates.

The Guide, now in its seventh year, has been praised by ministers and education experts alike. Former schools minister David Laws called it 'public-service journalism in the best tradition.’”

BY
CLAIRE MILLER
SAMAR MAGUIRE

The view from Year 7 parents

'Thanks for helping my son feel so welcome and settled during the first two weeks.'

'Our daughter seems to have had a good start after having felt very anxious before the summer holidays. We strongly believe that the systems put in place to ensure a smooth transition have contributed to her positive attitude towards secondary school. Thank you very much.'

'It has been such a build up for him, but he seems genuinely happy and has such positive things to say about his lessons and his teachers. Thank you for all that you do!'

'Thanks for helping my son feel so welcome and settled during the first two weeks.'

The view from Year 7 parents

Comberton Village College
Year 7 parent survey
September 2023

Pastoral care

98% said that they felt their child was well-prepared to start CVC

99% said that their child has made a good start to CVC

97% said that their child is happy at school

96% said that their child feels safe at school

95% said that behaviour at CVC seems to be good

Our Year 7 Curriculum



- HOME
- ABOUT US
- CURRICULUM
- PARENT INFORMATION
- NEWS & EVENTS
- CONTACT US

- Our Curriculum
- Choosing your Options
- iPads for learning
- Assessment
- Literacy
- Remote curriculum
- Personal Development and Character

Our curriculum rationale and organisation



Curriculum

Our curriculum comprises a full range of subjects, including religious education, relationship and sex education and personal, social, health and economic education, drawing on good practice. Our intention is that our broad curriculum - including not only our academic subjects, but our pastoral curriculum and all that we offer beyond the classroom - contributes to advancing equality, diversity and inclusion.

We want our curriculum to have a positive impact on pupils of all races, disabilities, religions, sexual orientation and gender. We believe that all pupils of all kinds are entitled to a high-quality education, which includes preparing our pupils for life in modern Britain. Through our curriculum, we aim to develop our pupils into citizens who understand and appreciate diversity and who are respectful of difference. Our curriculum for those pupils who have SEND is ambitious, with the vast majority supported to follow a full curriculum where possible, but amended where appropriate to suit those with particularly high individual needs.



Parent Information

[PORTALS](#)
[THE CAM ACADEMY TRUST](#)
[SPORTS & ARTS](#)
[ADULT EDUCATION](#)
[VACANCIES](#)
[COMBERTON SIXTH FORM](#)



[HOME](#)
[ABOUT US](#)
[CURRICULUM](#)
[PARENT INFORMATION](#)
[NEWS & EVENTS](#)
[CONTACT US](#)



- Back to Parent & Student Information
- Year 6 to Year 7 transition ▾
- Year 7** ▾
- Year 8
- Year 9
- Year 10
- Year 11

- A KS3 GO 4 Schools guide for parents
- Beaumanor Parents Info
- Comberton Post log on info
- KS3 reading challenge
- Pupil Handbook 2023-24



Year 7 2023-24

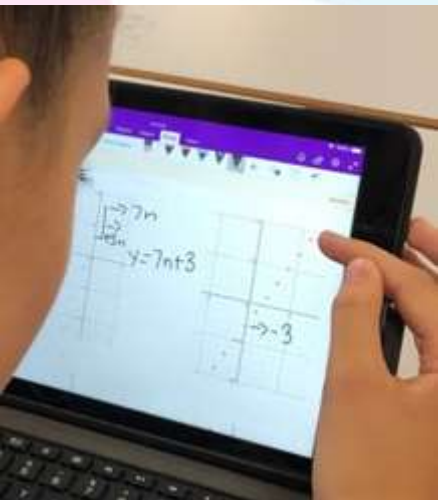
Welcome to Year 7 at Comberton Village College.

Not only do we provide strong academic challenge through the variety of disciplines we teach, we also aim to develop our students into **caring**, **confident** and **capable** members of society and members of our community. We want our students to have rich and enjoyable experiences at school and our curriculum is central to this (see our Year 7 curriculum booklet to the left of this page).

[Year](#)
[Pastoral team](#)
[TG](#)
[Room](#)
[Tutor](#)
[Attached staff](#)

High quality teaching and learning, including iPads for learning for all pupils

- Enhancing pupils' overall learning experience
- Access to learning anywhere, anytime.
- Narrowing the digital divide between pupils.
- Encouraging independence.
- Adapting learning.
- Opportunities to create and share work.
- A voluntary parental contribution.



A school within a school

Outstanding Pastoral Care

- A 21st century personal development curriculum
- Form Tutor and Pastoral Team support
- Wider In-School Support
- External Support Services
- Opportunities to develop and thrive



A large number and wide range of activities, trips and visits, including abroad

Sport

Music

E&D

Art

Games



Culture

“Classroom teaching is exceptionally well supported by the wide range of extra-curricular opportunities...”

CAM Academy Trust Review

The view from our Head Prefects

Aurora
Leo



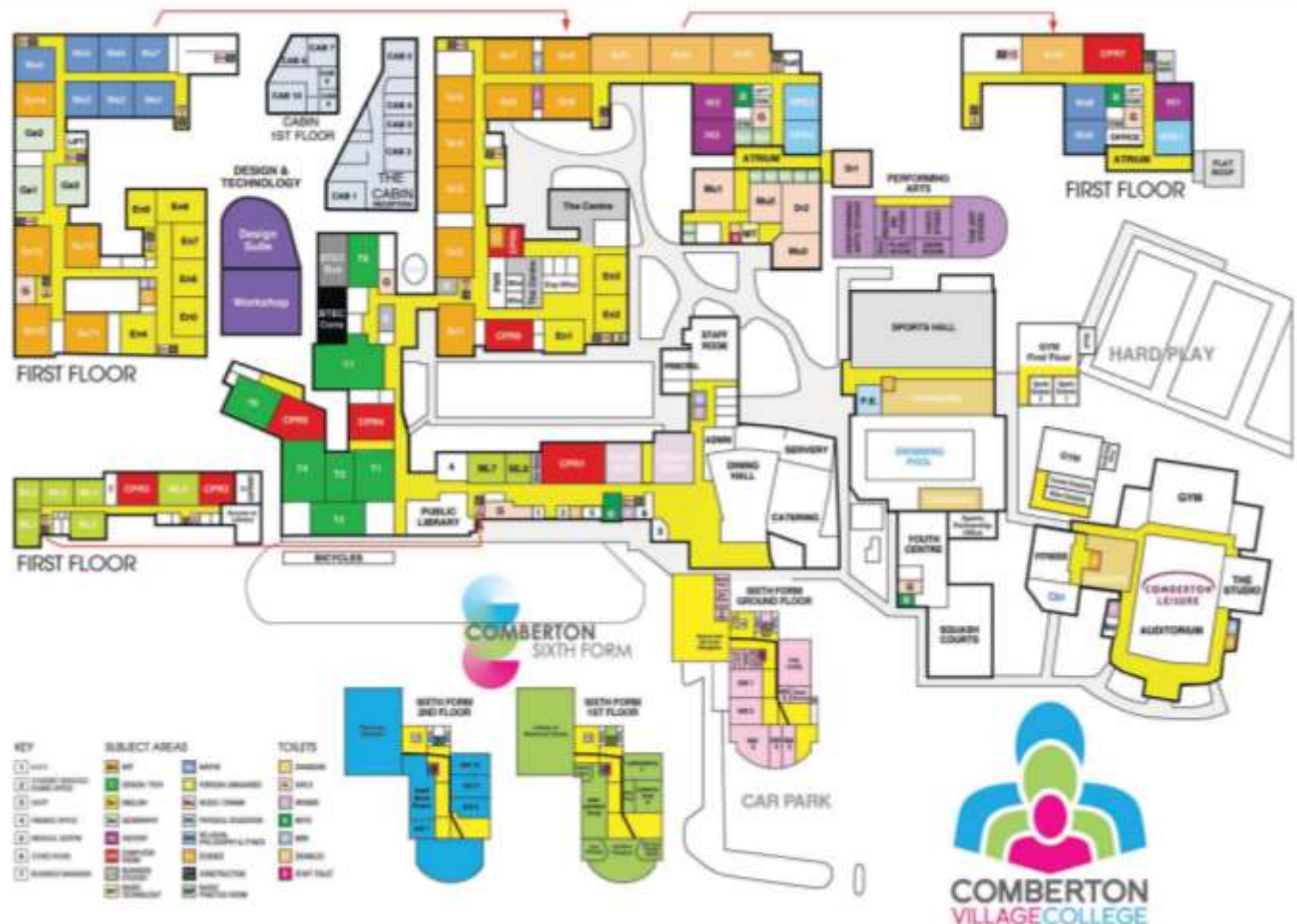
The view from our Head Prefects

Josie
Rufus



The view from year 7 pupils

Antigoni
Unathi



Admissions for September 2024

Applications are made online to Cambs County Council using their citizen portal. For a paper application please call [0345 045 1370](tel:03450451370) for a form.

Admissions process starts

11 September 2023

31 October 2023 (midnight)

1 March 2024

Applications opened

Deadline for applications (national closing date)

Offers sent to applicants who had submitted application by 31 October 2023.

Late applications (second round)

1 November 2023

31 March 2024 (midnight)

27 April 2024

Second round applications open

Deadline for second round applications

Offers sent to applicants who had submitted applications from 1 November 2023 to 31 March 2024.

Late applications (as received)

27 April 2024 - 31 August 2024

Applications received after 31 March 2024 will not be considered until the second round of offers have been sent out.

They will be processed in order of date from when County receive them.

Appeals
April 2024

Secondary school appeals take place.

<https://www.cambridgeshire.gov.uk/residents/children-and-families/schools-learning/apply-for-a-school-place/secondary-school/making-a-secondary-school-application-and-the-admissions-process>



*Welcome to
Comberton Village College
Open Evening
Thursday, 5th October 2023*



Could you make a difference to our students with autism and/or additional needs in school?

We are actively seeking to recruit Teaching Assistants to work in our additional needs departments.

We would particularly like to hear from you if you are a parent, recently retired, a recent graduate or are looking to gain experience of working in an area that provides tailored support to students with an inclusive outlook.

We have vacancies in several additional needs departments at Comberton Village College, supporting students with a variety of needs, including Autism, learning difficulties, physical impairments, social or emotional needs.

Part-time positions available; term time only.

To apply or obtain further information, visit:
<https://www.combertonvc.org/contact-us/current-vacancies>



Excellent facilities for learning and thriving



Global, open-minded citizens



Class of 2023 GCSE Results

38% all grades were 9/8/7 (A*-A in previous measures)

Total grades at 9 – 8: 24%

Total grades at 9 – 7: 38%

Total grades at 9 – 4: 84%

Pupils achieving grade 4 and above in English & maths:
82%



